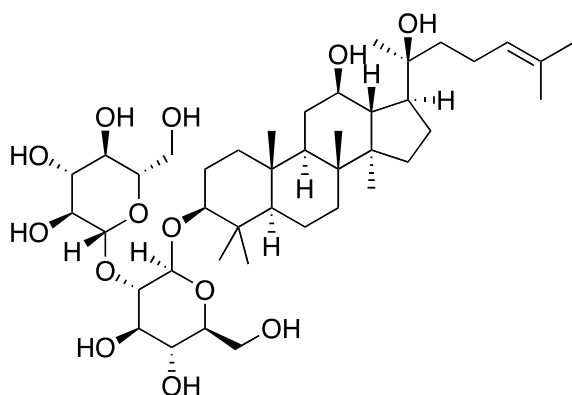


Ginsenoside Rg3



20(*S*)-Ginsenoside Rg3

【化合物】 Ginsenoside Rg3

【測定機器】 LC-MS/MS

【対象】 動物（ヒト）

【代謝実験】 An HPLC/MS/MS method with ESI interface was developed and validated for the quantitative determination of ginsenoside Rg3 in human plasma and urine. Twenty-four healthy male Chinese volunteers were enrolled. All subjects were intramuscular injected a single dose of 10 mg, 30 mg or 60 mg ginsenoside Rg3, and subsequently sampled at intervals. The sensitivity of ginsenoside Rg3 in plasma and in urine was suitable for pharmacokinetic studies of ginsenoside Rg3 formulations. [Qian et al., *Journal of Chromatography B*, 878: 2266–2273 (2010)]

【参考文献】

Qian Zhao, Xin Zheng, Ji Jiang, Hui Zhou, Pei Hu, Determination of ginsenoside Rg3 in human plasma and urine by high performance liquid chromatography–tandem mass spectrometry. *Journal of Chromatography B*, 878: 2266–2273 (2010).