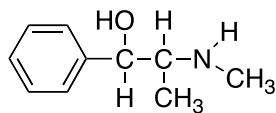


## Pseudoephedrine



## Pseudoephedrine

【化合物】 Pseudoephedrine

【測定機器】 Capillary electrophoresis with electrochemiluminescence detection

【対象】 動物（ヒト）

【代謝実験】 A novel method for the determination of ephedra alkaloids (methylephedrine and pseudoephedrine) was developed by electrophoresis capillary (CE) separation and electrochemiluminescence detection (ECL). The two ephedra alkaloids with very similar structures were well separated and detected under the optimum conditions. The proposed method was successfully applied to the determination of methylephedrine and pseudoephedrine in human urine and the monitoring of pharmacokinetics for PSE. [Liu et al., *Biomed. Chromatogr.*, **23**: 1138–1144 (2009)]

## 【参考文献】

Yan-Ming Liu, Wei Tian, Yu-Xiu Jia and Hai-Yan Yue, Simultaneous determination of methylephedrine and pseudoephedrine in human urine by CE with electrochemiluminescence detection and its application to pharmacokinetics. Simultaneous determination of methylephedrine and pseudoephedrine. *Biomed. Chromatogr.*, **23**: 1138–1144 (2009).

Ma Ming, Feng Fang, Sheng Yulan, Cui Shuangjin, Liu Han, Development and evaluation of an efficient HPLC/MS/MS method for the simultaneous determination of pseudoephedrine and cetirizine in human plasma: Application to phase-I pharmacokinetic study. *Journal of Chromatography B*, **846**, 105–111 (2007).